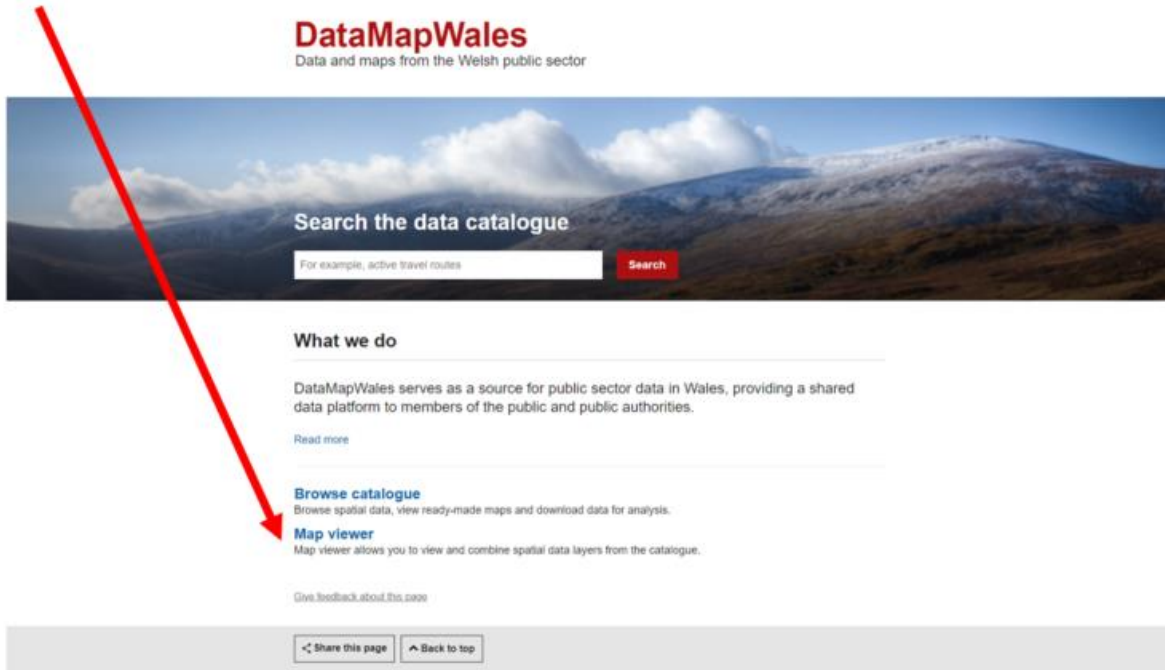


# DataMapWales – How to Download LiDAR data

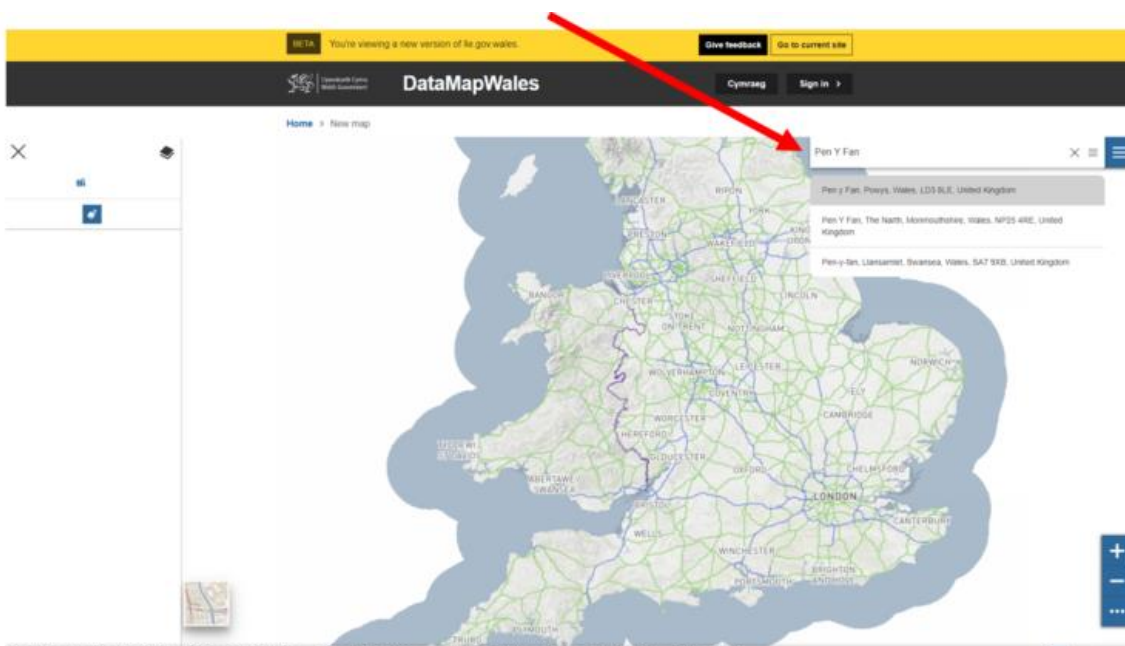
[LiDAR](#) - Light Detection and Ranging

1. Go to the DataMapWales [homepage](#)

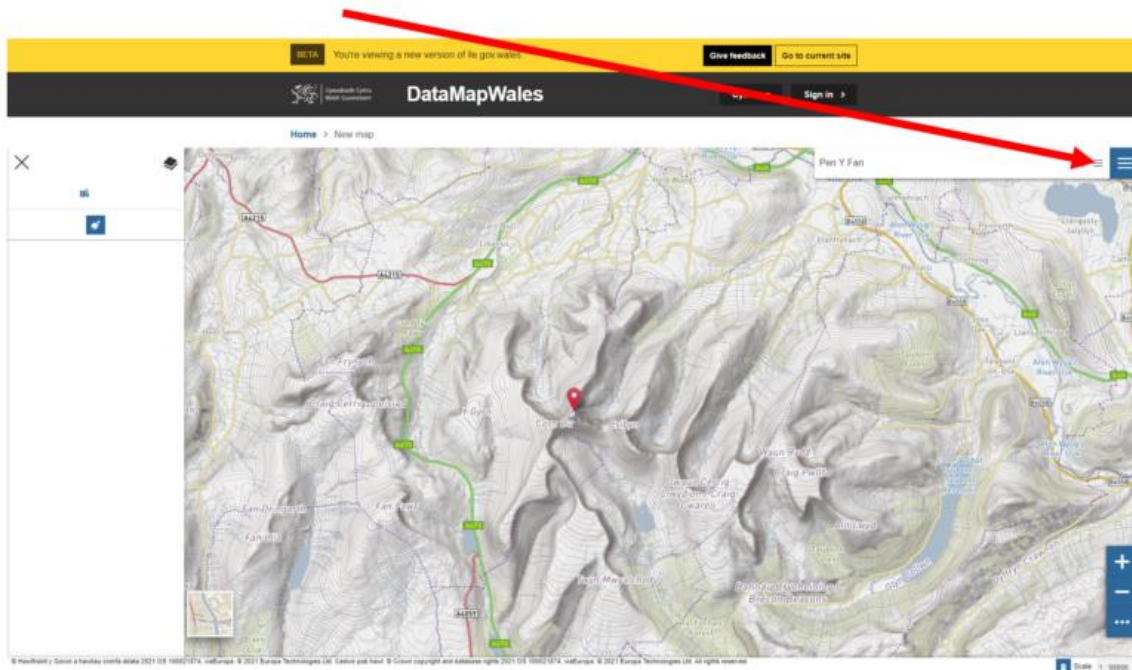
2. Click on Map viewer.



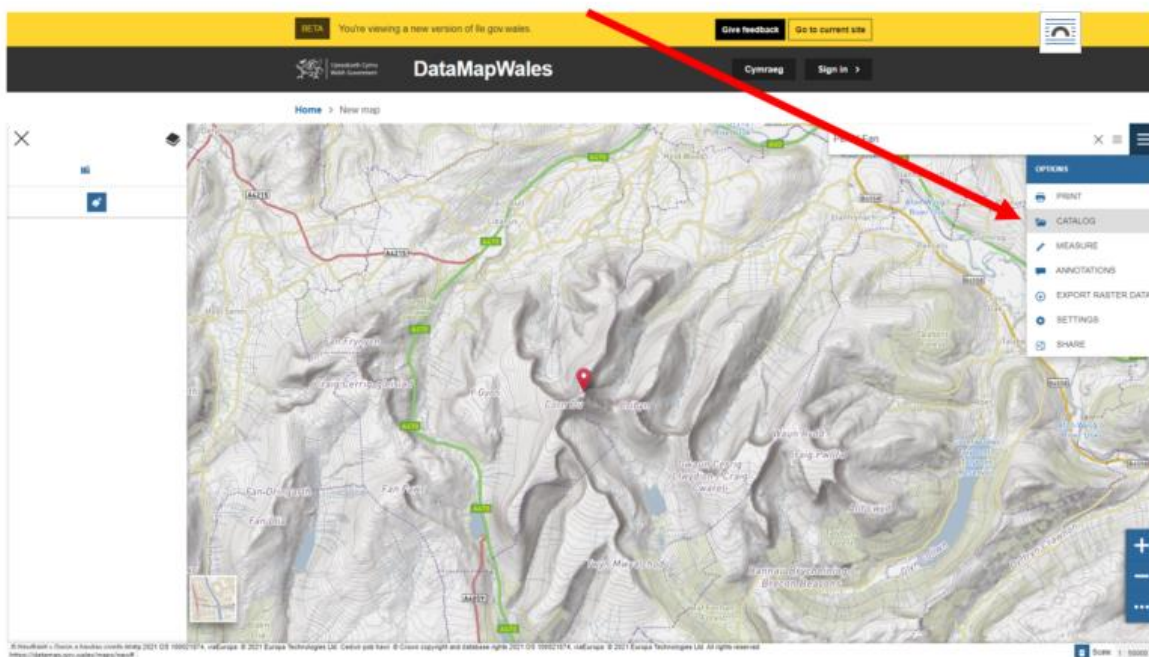
3. Search or zoom to the required location



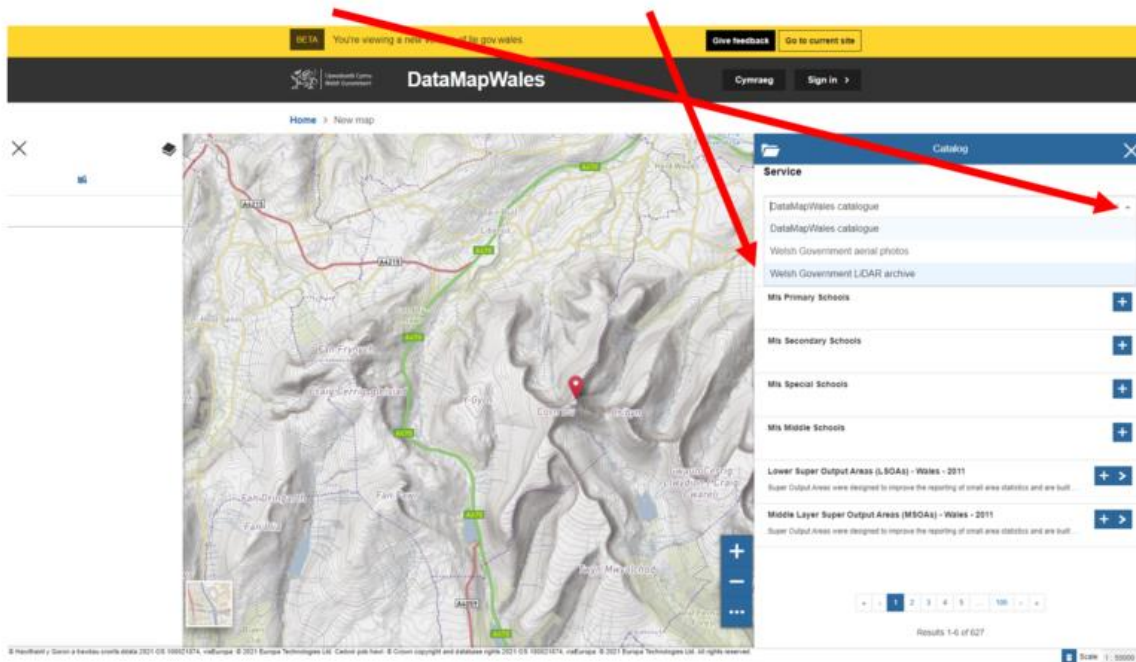
4. Click on the burger menu.



5. Choose 'Catalog' from the dropdown list.

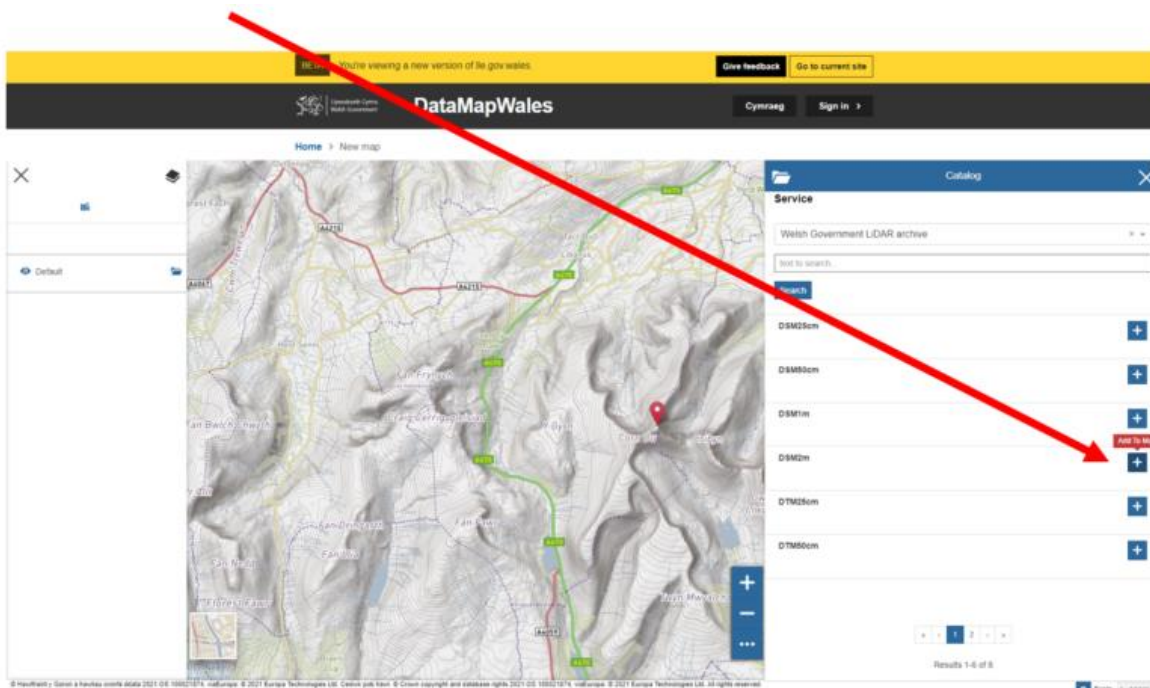


6. From the catalogue dropdown list choose 'Welsh Government LiDAR archive'

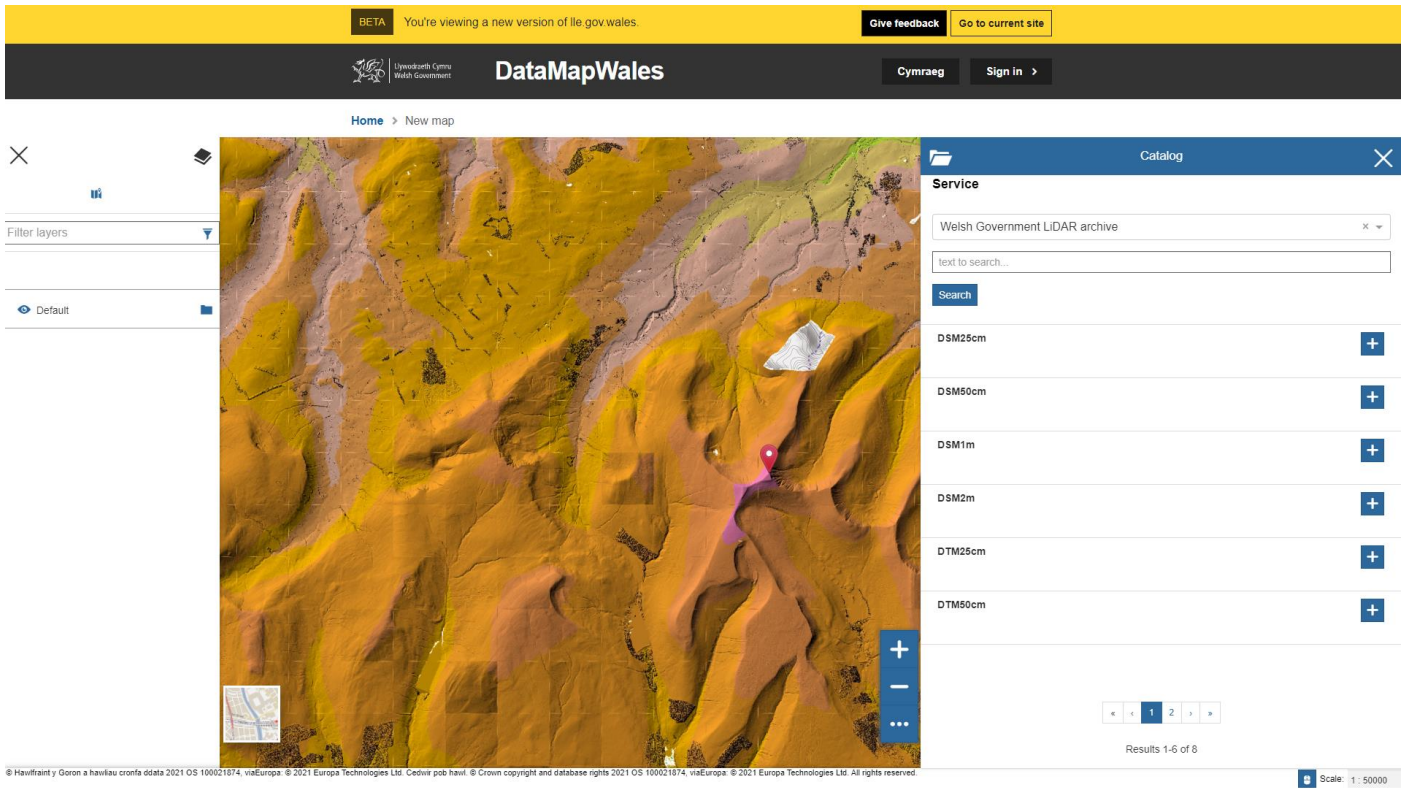


7. To confirm that LiDAR data is available for the area selected, add the required raster elevation model and resolution layer to the map.

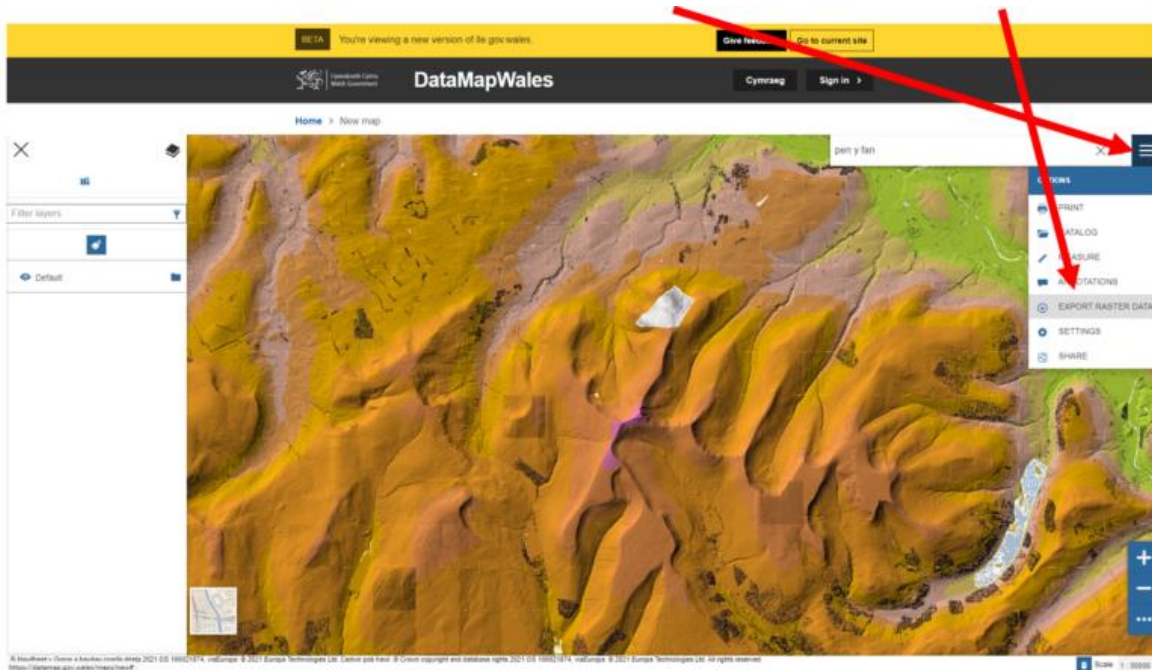
- DSM = digital surface model – “bare earth” elevation data plus natural and artificial features
- DTM = digital terrain model – “bare earth” elevation data



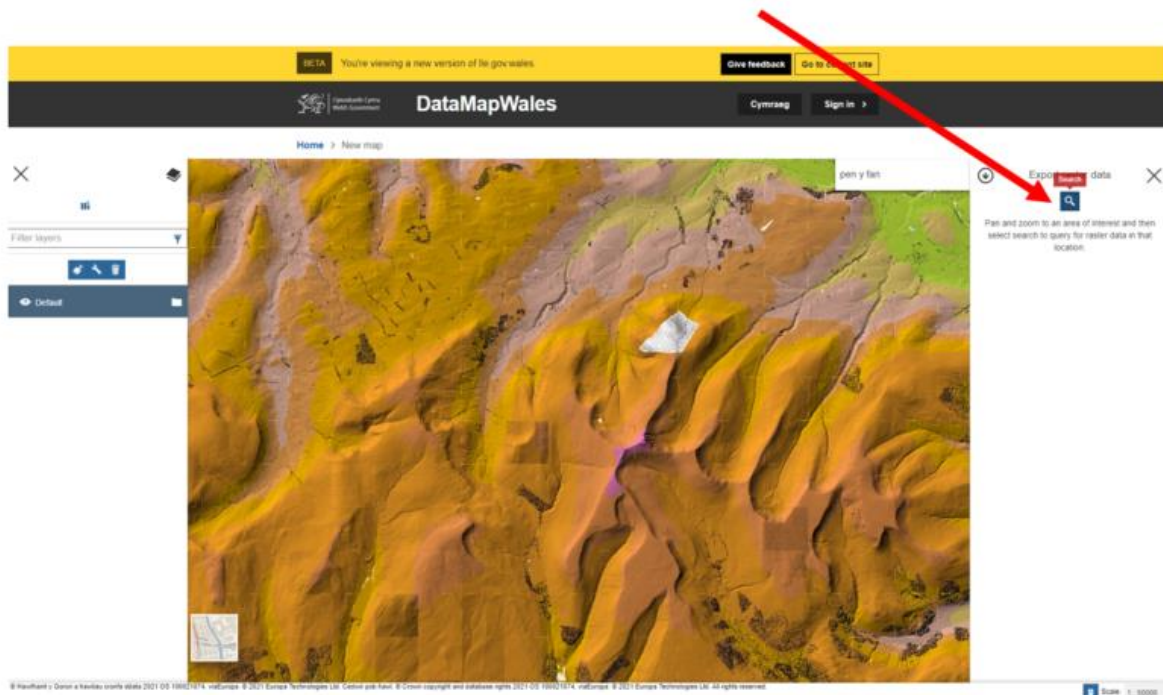
If LiDAR data is available for the selected area you will see a semi-transparent coloured layer with the colours indicating elevations. This may take a few seconds to appear.



8. Close the 'Catalog' window and click on the burger menu again. Select 'Export Raster Data'.

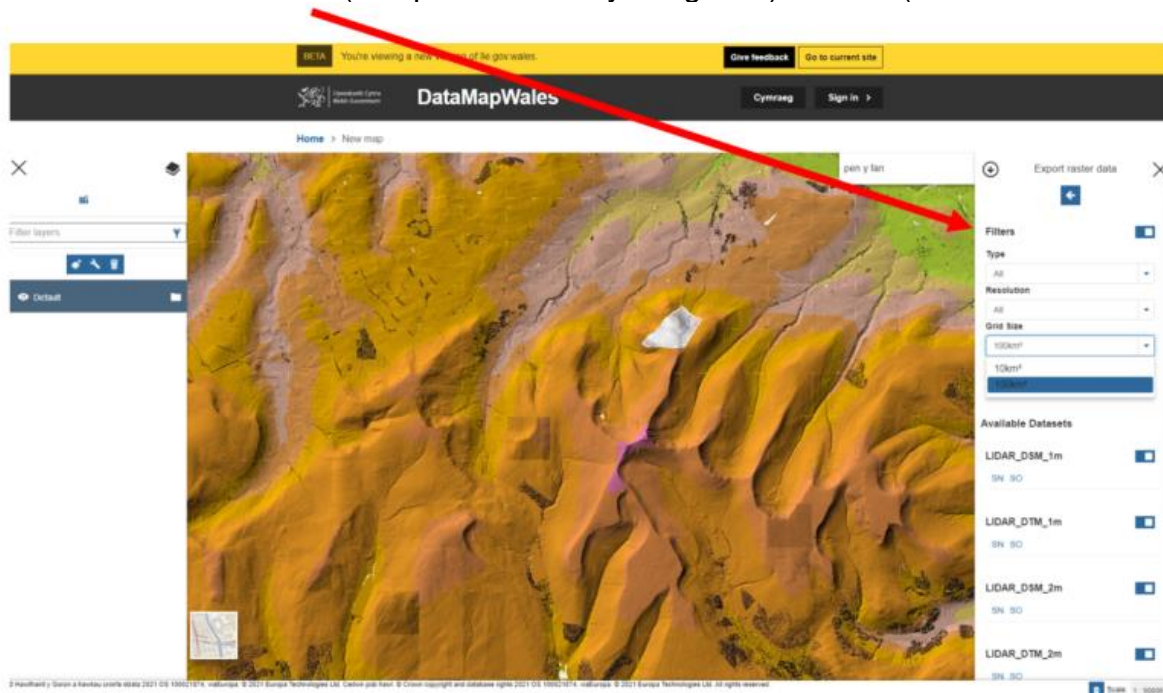


9. Click on the search icon in the 'Export raster data' window.

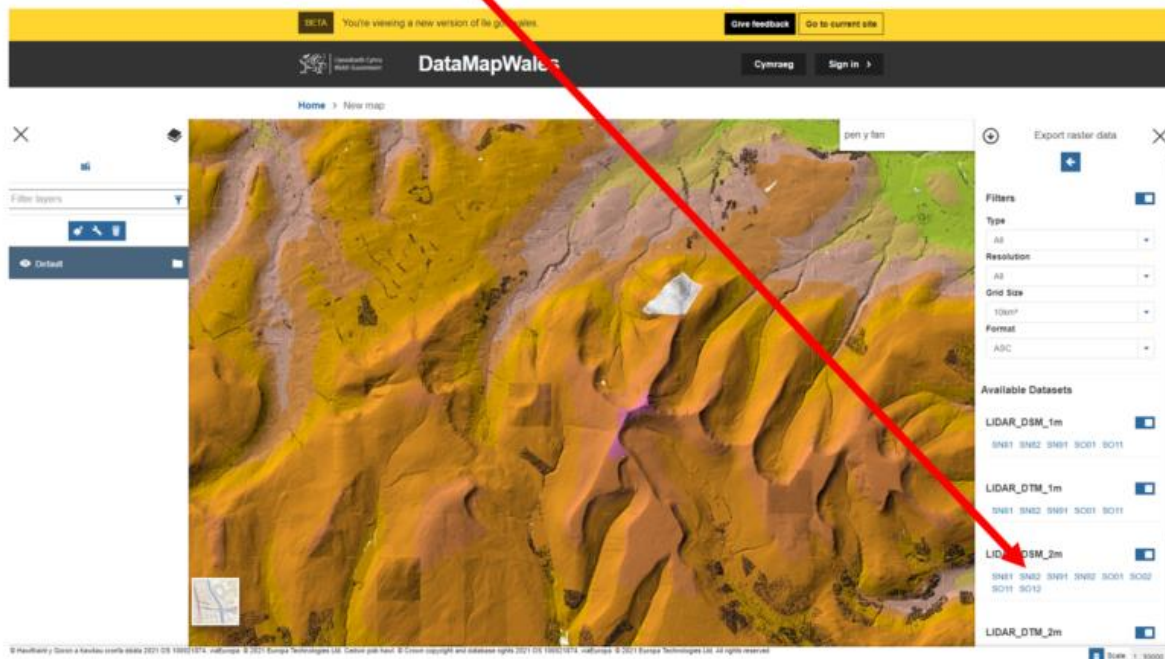


10. Adjust filters if required.

- Type = DSM or DTM
- Resolution = precision of data, more precise means more data and larger, slower downloads
- Grid Size = 10km<sup>2</sup> (smaller, faster download) or 100km<sup>2</sup> block (larger, slower download)
- Format = JPG (compressed binary image file) or ASC (text delimited format)



11. Click on the required [Ordnance Survey National Grid](#) reference number under the required raster elevation model and resolution.



12. The LiDAR dataset selected will now be available as a download in your Downloads folder. This will take a little while, depending on the size of the data you have selected.

